

UB200i



## System Microscope

UCIS  
Excellent UCIS Optics



F. H. Prymus Violetta Burgielska ul. Wałowa 31 57-220 Ziębice  
WWW: [www.optek.pl](http://www.optek.pl) e-mail: [biuro@optek.pl](mailto:biuro@optek.pl)  
tel./fax.: 74 8 192 346 tel.kom.: 663 787 693

# Outstanding optical and system performance with excellent cost-efficiency

UB200i is our contribution to you for your application in medicine, clinical laboratories, pathology, and biology, from routine task to research.

Equipped with Advanced UCIS infinity optics and ergonomic, flexible, stable, high efficiency mechanism, UB200i can satisfy your observation of brightfield, darkfield, polarization, phase-contrast, and fluorescence.



With UCIS infinity independent-achromatic optical system, chromatic aberrations and curvature of field are both ideally corrected over the field of view. And the UCIS objectives own higher NAs producing crisp, clear images with minimal flare.



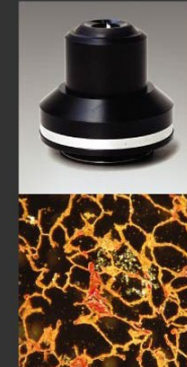
## Eyepieces

High eye-point up to 21mm, diopter adjustable. Standard 10X eyepieces view-field is 20mm. And optional 10X eyepiece up to 22mm view-field can take you into wider vision and more comfortable feeling.



## Abbe condenser

NA 1.25 with iris diaphragm and with socket to accommodate PH slide. Condenser center adjustable, color-coded diaphragm scale markings corresponded with the objectives of different powers.



## Dry dark-field condenser

For your dark-field observation and can be installed quickly and conveniently.



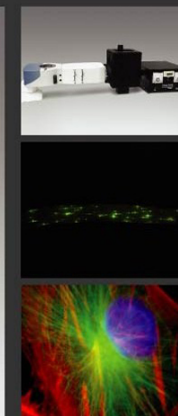
## Simple polarizing observation

With Analyzer and Polarizer, you can conduct your polarizing observation easily.



## Phase-contrast condenser

Multi-purpose Phase-contrast Condenser, NA:1.25. Phase-contrast observation from 10X to 100X and Dark-field observation from 10X to 40X is allowed.



## Reflected Light Fluorescence

Users can choose between UV, V, B, G excitation and transmitted light observations. UCIS optics provide bright fluorescence images, with no intermediate magnifications when changing from transmitted light to fluorescence observations. Standard plan objectives can be used without replacement. 100W mercury lamphouses are available.



**With ergonomic design, stable mechanism and flexible upgrade space, 200i deserve your trust.  
One-piece construction design from arm to base, robust and vibration-resistant.**



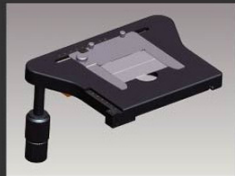
**Inward-facing revolving nosepiece**

Unrestricted access to the space in front of the objective allows specimens to be exchanged quickly and easily. The quadruple or quintuple nosepiece are both available.



**Mechanical Stage**

156x138mm platform, with X/Y travel of 76x54mm by low-positioned X/Y coaxial control knob, with scale mark and specimen-slide clip, enough space to hold 2 specimen-slide.



**Rackless stage with enhanced operability**

To keep the work area clear, and to avoid interference with observation operations, the X-direction travel guide does not extend and sub-scale displays are designed for easy read-out.

179 (205) x175mm platform, with X/Y travel of 75x50mm by low-positioned X/Y coaxial control knob(right or left hand), with scale mark and specimen-slide clip, enough space to hold 2 specimen-slide.



**Observation tub**

Binocular tube and Trinocular tube both available, view-field up to 22mm, tub 30°inclined, interpupillary distance 48-75mm, trinocular light is split 20/80 by a high quality prism. Digital camera or computer can be conveniently connected to the Trinocular tube, make your file work more easy.



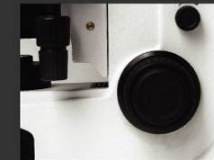
**Comfortable Ergolift**

Optional ergolift is special piece that raises the entire microscope to fit the height of higher user.



**Grasping Part**

Make you more easy to move the microscope.

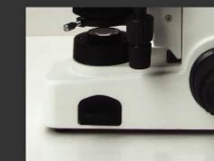


The height-adjustable co-axial coarse/fine focusing knob makes your routine work as comfortable and effortless as possible. Only a few hand movements are required to adjust the microscope to the user's arm length, and hand size.



**Illumination**

Different illumination of 6V/20W、6V30W halogen bulb or 3W LED bulb are all available up to your choice. The halogen bulbs can be replace easily and in very little time. Just remove the socket form the side of the microscope, replace the lamp, and reinsert the socket into the microscope, and the task is done.

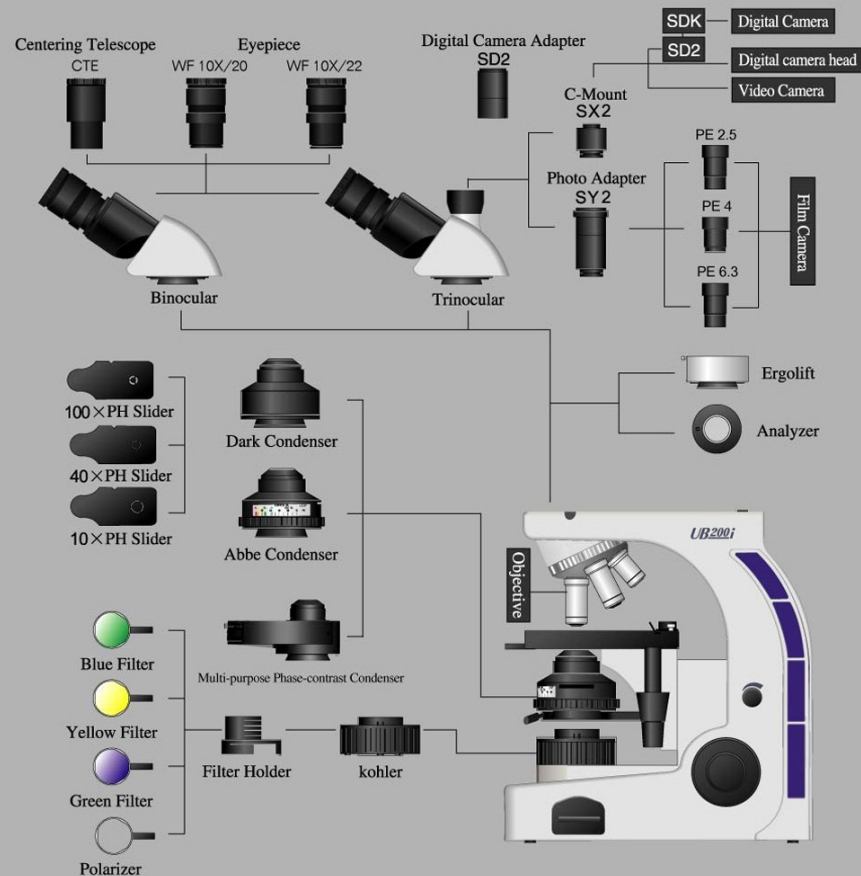


**Heat-sink device of high efficiency**

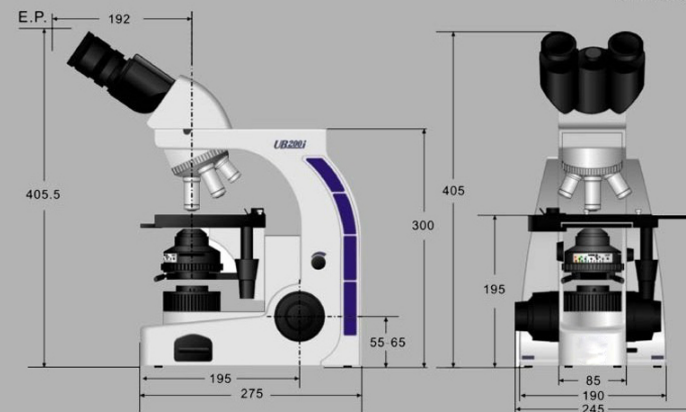
Limit the surface of UB200i microscope at lower temperature and keeps the user from burnt.

# UB200i System Microscope Standard Outfits and Secifications

Parts	Secifications	UB202i	UB203i	order number
UB200i Frame	One-piece construction from arm to base.	●	●	UB200
Optics	UCIS Infinity Independent Achromatic Optical Design	●	●	UB200
Seidentopf Observation Tube	Binocular Tube, Interupillary distance 52-75mm,30°inclined,360° rotateable,	●	○	MS2
	Binocular Tube, Interupillary distance 48-75mm,30°inclined,360° rotateable,	○	○	MS2A
	Trinocular Tube, Interupillary distance 52-75mm,30°inclined,trinocular light is split 20/80 by a high quality prism.	○	●	MT2
	Trinocular Tube, Interupillary distance 48-75mm,30°inclined,trinocular light is split 20/80 by a high quality prism.	○	○	MT2A
Byeepiece	WF10X/20, High eye-point up to 21mm, diopter adjustable.	●●	●●	E1020PA
	WF10X/22, High eye-point up to 21mm, diopter adjustable.	○	○	E1022PC
	WF16X/14	○	○	E1614WB
	WF10X/20(Pointer), High eye-point up to 21mm, diopter adjustable.	○	○	E1020GA
	WF10X/22(Pointer), High eye-point up to 21mm, diopter adjustable.	○	○	E1022GC
	Reticule Eyepiece: CROSSWF10X/20	○	○	E1020RA
	Reticule Eyepiece: CROSSWF10X/22	○	○	E1022RC
Centering Telescope	CTE	○	○	WY2
Infinity Achromatic Objectives	4X/0.13 ∞/0.17, WD12.31	●	●	WB-E4A
	10X/0.30 ∞/0.17, WD6.75	●	●	WB-E10A
	40X/0.70 ∞/0.17, WD0.76 (Spring)	●	●	WB-E40A
	100X/1.25 ∞/0.17, WD0.12 (Spring,Oil)	●	●	WB-E100A
Infinity Achromatic Phase-Contrast Objectives	10X/0.13 ∞/0.17, WD6.75	○	○	WB-EPH10A/WB-EPHn10A
	40X/0.70 ∞/0.17, WD0.76 (Spring)	○	○	WB-EPH40A/WB-EPHn40A
	100X/1.25 ∞/0.17, WD0.12 (Spring,Oil)	○	○	WB-EPH100A/WB-EPHn100A
	10X/0.13 ∞/0.17, WD12.31	○	○	WB-P4A
Infinity Plan Objectives	10X/0.30 ∞/0.17, WD4.00	○	○	WB-P10A
	20X/0.45 ∞/0.17, WD1.24	○	○	WB-P20A
	40X/0.70 ∞/0.17, WD0.29 (Spring)	○	○	WB-P40A
	100X/1.25 ∞/0.17, WD0.09 (Spring,Oil)	○	○	WB-P100A
Infinity Plan Phase-Contrast Objectives	10X/0.13 ∞/0.17, WD4.00	○	○	WB-PPH10A/WB-PPHn10A
	20X/0.45 ∞/0.17, WD1.24	○	○	WB-PPH20A/WB-PPHn20A
	40X/0.70 ∞/0.17, WD0.29 (Spring)	○	○	WB-PPH40A/WB-PPHn40A
	100X/1.25 ∞/0.17, WD0.09 (Spring,Oil)	○	○	WB-PPH100A/WB-PPHn100A
Phase-Contrast Slide	10X PH	○	○	PCB-PPH10A
	40X PH	○	○	PCB-PPH40A
	100X PH	○	○	PCB-PPH100A
Condenser	Multi-purpose Phase-contrast Condenser: NA:1.25, Phase-contrast observation from 10X to 100X and Dark-field observation from 10X to 40X is allowed.	○	○	JG20
	Abbe condenser/Abbe condenser: NA 1.25, with iris diaphragm, with socket to accommodate PH-slide, Condenser center adjustable, color-coded diaphragm scale markings cooresponded with the objectives of different powers.	●	●	JG2
	Dark condenser	○	○	JG10
Coarse/Fine Adjustment	Low-positioning, Co-axial coarse and fine focusing knob with its height adjustable, Coars knob tension adjustable, Fine knob minium reading:1microns of left-side fine knob, Maximum coars working distance:22mm	●	●	
Stage	Mechanical Stage: 156x138mm platform, with X/Y travel of 76x54mm by low-positioned X/Y coaxial control knob, with scale mark and specimen-slide clip, enough space to hold 2 specimen-slide.	●	●	ZT2
	Rackless Mechanical Stage: 179 (205) x175mm platform, with X/Y travel of 75x50mm by low-positioned X/Y coaxial control knob(Right or left hand), with scale mark and specimen-slide clip, enough space to hold 2 specimen-slide.	○	○	ZT2A
Revolving Nosepiece	quadruple, inward facing	●	●	ZQ480
with field diaphragm	quintuple, inward facing	○	○	ZQ580
Electrical Parts	For Halogen Bulb Input: 100-240V ~ 0.5A, 47-63Hz, Output:6V 3.4A, Fuse:3.15A, 250V, F 45x20mm, Halogen Bulb Socket: G4,CE Certified	●	●	Q02
	For LED	○	○	Q0M2
C-Mount	SX2	○	●	SX2
Digital Camera Adapter	SD2	○	○	SD2
Digital Camera Joint	SDK			SDK
Photo Tube	SY2	○	○	SY2
Photo Eyepiece	PE2.5X	○	○	S2.5
	PE4X	○	○	S4
	PE6.3X	○	○	S6.3
Filter	Blue	●	●	L1A1-0011
	Green	○	○	L1U1-0011
	Yellow	○	○	L1H1-0011
	Grass Glass	○	○	L1B1-0011
Filter Holder	Flip-out Filter holder: (Attached to the condenser holder) for one filter.	●	●	L1A1-0071
	Filter Holder: (Attached to the Kohler) for more than one filter.	○	○	L1A2-0071
Polarization Kits	Analyzer	○	○	PQ1
	Polarizer	○	○	PY1
Reflected Fluorescence Attachment	B.G Excitation	○	○	
	UV,V.B,G Excitation	○	○	
	100W mercury lamphouses	○	○	
Illumiation Bulb	6V20W Osram Halogen Bulb	●●●	●●●	BZ-0022A
	6V30W Osram Halogen Bulb	○	○	BZ-0022B
	3W LED Bulb	○	○	DXZ-2-1000
Immerse Oil	8ml	●	●	BZ-0027
Allen Screw Driver	Φ2mm	●	●	BZ2-0018
Power Line	1.8m, CE certified	●	●	BZ-0021
Package	Inner package: foam, plastic bag; Out Package: Paper box	●	●	BZ2-0011
Symbol Meaning: ● means standard, ○ means optional				



Dimensions ( Unit : mm )



Net weight of Standard Outfits:9 4kg

Gorss Weight of Standard Outfits:12 4kg